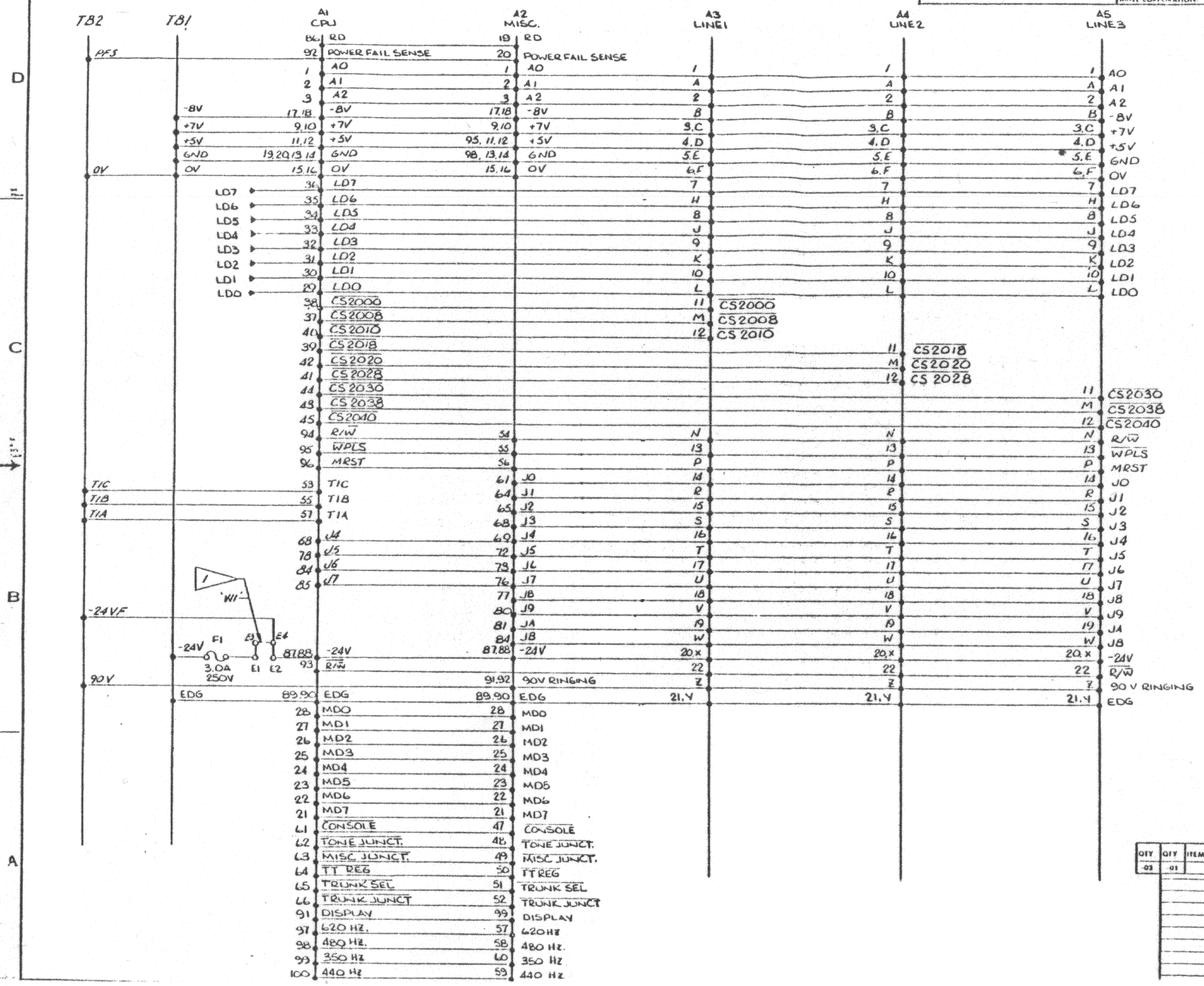


5. Permanently mark part number & revision in approx. location indicated, using .09" .12 high characters (color) 1

These drawings and specifications are the property of MITEL CORPORATION and shall not be reproduced, or copied, or used as the basis for its manufacture, or sale of apparatus without the written permission of MITEL CORPORATION.

REVISION				
REV	DESCRIPTION	DATE	BY	CHK
1	END RELEASE	EM		5/79
4	PRODUCTION REL	EM		5/79
B	BRD. SIZE, CONNECTOR LOCATIONS MODIFIED	EM		5/79
C	BOARD REDESIGNED	EM		5/79
D	M16 HOLES RELOCATED	KB		5/79
E	BOARD REDESIGNED	EM		5/79
F	ARTWORK REVISED	TR		5/79
G	ECR 1333 INCORP	RTA	KT	5/79
H	ORN 1507 INCORP	RTA	KT	5/79
J	ECR 1539 INC.	RB		



REV  
J

NOTES: 1 - REMOVE JUMPER (WI) BETWEEN E3 & E4 BEFORE SHIPPING.

QTY	QTY	ITEM	PART NO.	MANUFACTURER/SPECIFICATION	DESCRIPTION
02	01				

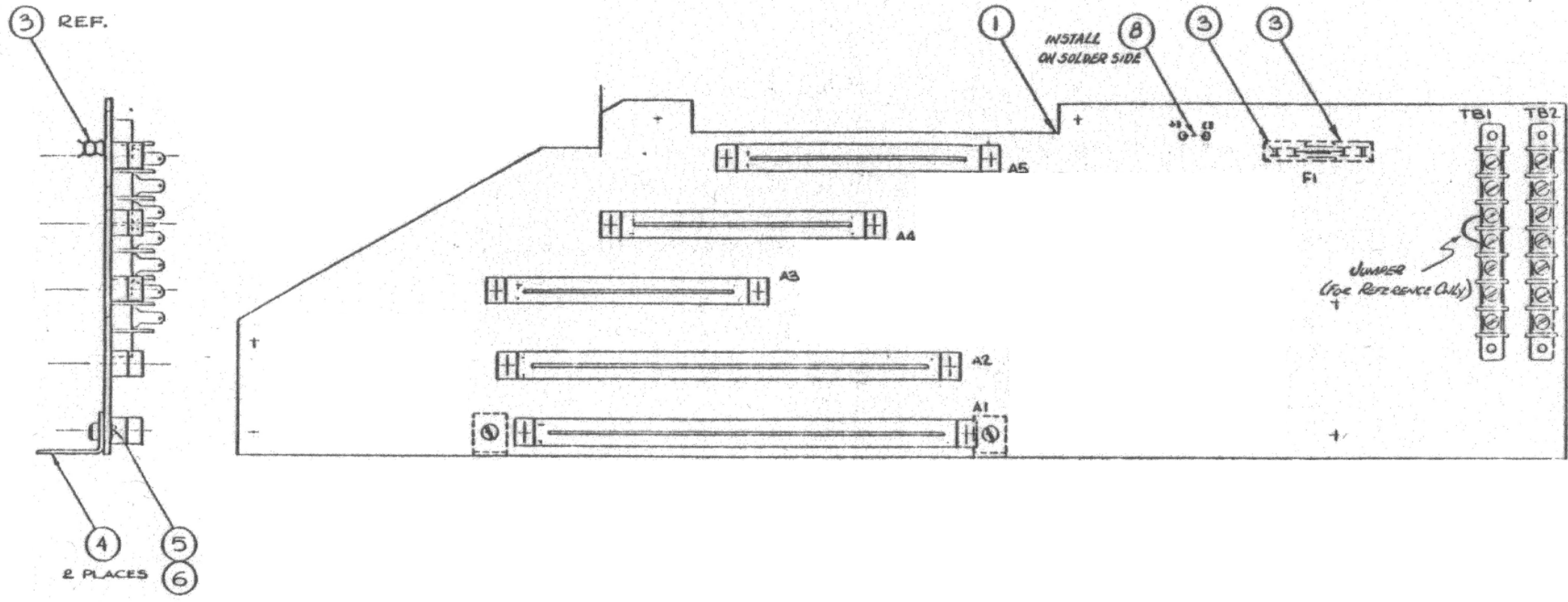
UNLESS OTHERWISE SPECIFIED	DRN	MURDM	50	 SCHEMATIC DIAG BACKPLANE 5x-20
TOLERANCES	DIS	COLN	50	
.XX2	CHK	14-8	24-20	
( INDICATES mm	ENGR		1.75	
ANGLES 0°-30°	APPR			
MATERIAL	REF DWG			PRODUCT CODE
FINISH				D 1033910

8 7 6 5 4 3 2 1

Permanently mark part number & revision in appropriate location indicated, using .09" high characters (min)

These drawings and specifications are the property of MITEL CORPORATION and shall not be reproduced, copied, or used as the basis for the manufacture, or sale of apparatus without the written permission of MITEL CORPORATION.

REV	REVISION		
	DATE	DESCRIPTION	BY
E		BOARD REDESIGNED	EM
F		SIDE VIEW ADDED PARTS LIST REVISED ACTWORK REVISED	HC
G	10/15/79	REVISED	EM
H	11/20/79	INCORPORATED	EM
J		ECK 1589 INC.	R.B.



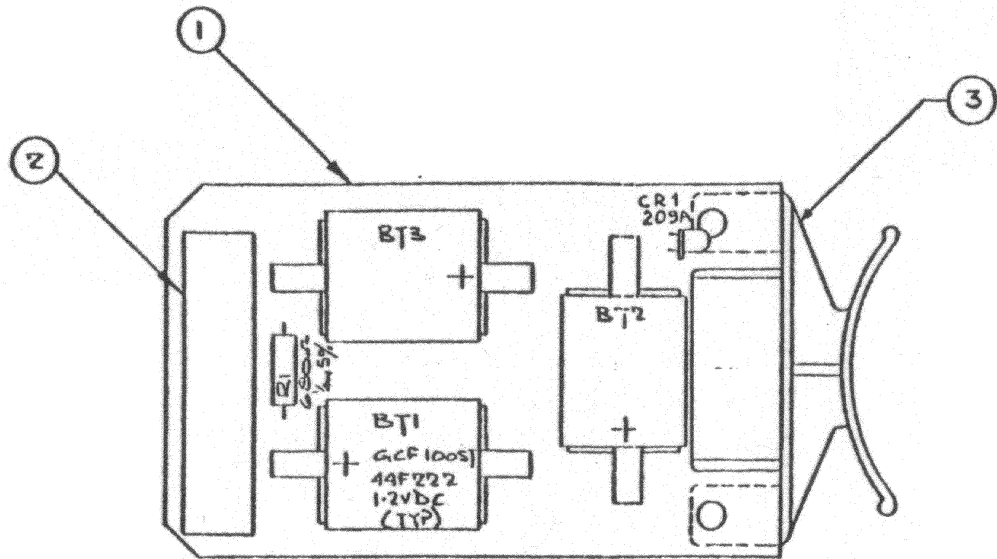
REV  
J

QTY	QTY	ITEM	PART NO.	MANUFACTURER / SPECIFICATION	DESCRIPTION
-02	-01				
PARTS LIST					
UNLESS OTHERWISE SPECIFIED					
DIMENSIONS IN MILLIMETERS					
.XXX —					
.XXX2 —					
Ø INDICATES mm					
ANGLES: 0°-30°					
MATERIAL					
FINISH					
USED ON					
NEXT ASSY					
				MITEL CORPORATION CIRCUIT CARD ASSY BACKPLANE	
				REF DWG PRODUCT CODE D 1033913	

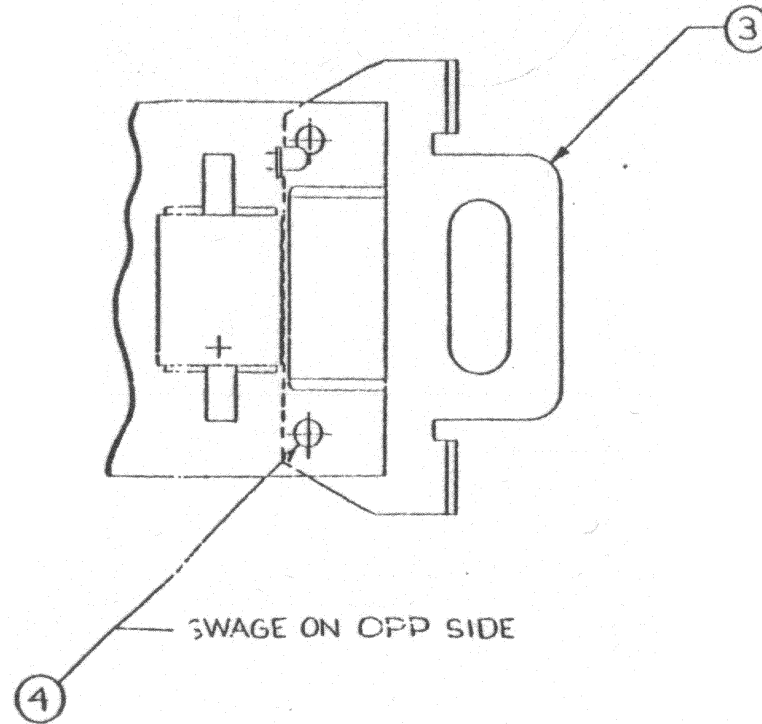
⚠ Permanently mark part number & revision in approx. location indicated, using .09/.12 high characters (color \_\_\_\_\_)

These drawings and specifications are the property of MITEL CORPORATION and shall not be reproduced, or copied, or used as the basis for the manufacture, or sale of apparatus without the written permission of MITEL CORPORATION.

CATEGORY	REVISION				
	ZONE	REV	DESCRIPTION	DPN	CHK DATE
	B		REDRAWN	DM	
	C		PULLER HANDLE ADDED	GM	
	C1		VARIANT-03 ADDED	RWB	
	C1		MRI-962 (See MRI)		
	C2		MRI-994 (See MRI) (03 Variant only)		



VARIANT -01  
VARIANT -02 (ITEM 3 REMOVED)



VARIANT -03

REV  
C1

QTY	QTY	ITEM	PART NO.	MANUFACTURER / SPECIFICATION	DESCRIPTION
-02	-01				
				UNLESS OTHERWISE SPECIFIED	
				TOLERANCE:	
				.XX±	
				.XXX±	
				(DIMENSIONS mm)	
				ANGLES: 0°-30°	
1023893-01	CM 9102	1033583		MATERIAL	
1023893-02	CM 9102			FINISH	
1023893-01	CM 9102				
VARIANT	USED ON	NEXT ASSY			

MITEL CORPORATION  
CCA.  
BATTERY BACK-UP  
C 1023893-01  
SCALE 2/1 SHEET 1 OF 1

4

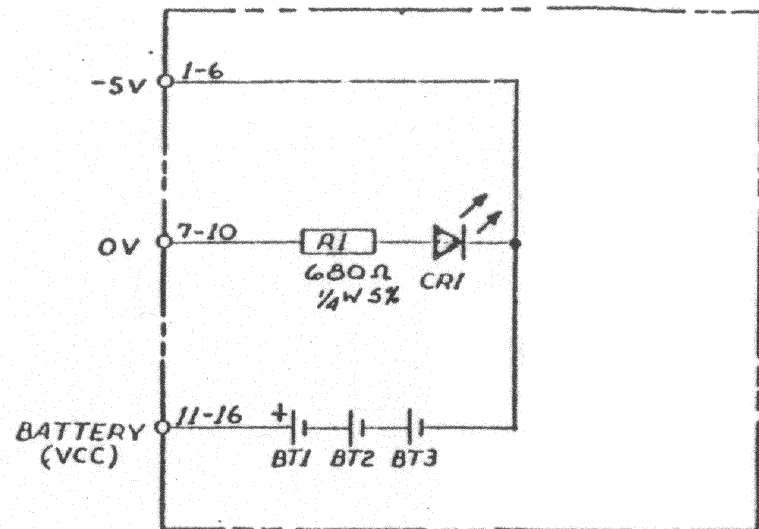
3

2

1


These drawings and specifications are the property of INTEL CORPORATION and shall not be reproduced, copied, or used as the basis for the manufacture, or sale of apparatus without the written permission of INTEL CORPORATION.

CATEGORY		REVISION			
ZONE	REV	DESCRIPTION	DRN	CHK	DATE
	1	ENG REL	RC		
	A	PROD. REL	C.G.		75
	B	NO CHANGE	DP		
	C	NO CHANGE	GM		15:7
	C1	ASSY CHANGE ONLY	RWB		15:7



REV  
C1

ITEM	QTY	PART NO.	MANUFACTURER/ SPECIFICATION	DESCRIPTION
PARTS LIST				
			UNLESS OTHERWISE SPECIFIED	DRN EC 25:77
			TOLERANCES	DES EC 25:77
			XXX ± .10	CHK
			XXX ± .05	ENG
			( ) DIMENSIONS mm	APPR 25:77
			ANGLES 0°-90°	REF. LING
			MATERIAL	
			FINISH	PRODUCT CODE
			USED ON	NEXT ASSY

 INTEL Corporation  
 SCHEMATIC D,  
 BATTERY  
 BACK-UP  
 C | 1023890  
 SHEET 1 OF 1